

Universe	Professional
Type	Verticality
Category	Connectors
Subcategory	Ultra-light carabiners

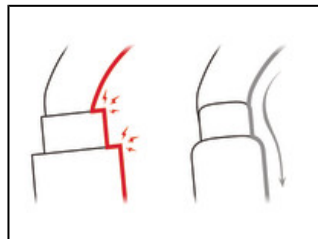


Sm'D

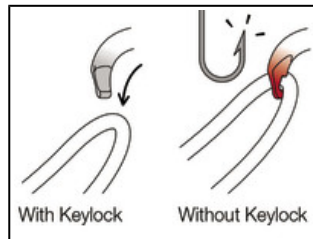
The compact Sm'D asymmetrical aluminum carabiner is recommended for workers at height looking to reduce weight to a minimum. D shape makes it especially suitable for attaching devices. It is available in two locking systems (automatic TRIACT-LOCK system or manual SCREW-LOCK system), or without a locking system.



Compact D shape is especially suitable for attaching devices such as the TIBLOC. A cord can be installed through the hole and connected to the TIBLOC to reduce the risk of dropping it.



Fluid interior design of Sm'D carabiners limits the risk of having a catch point and facilitates rotation of the carabiner.



To ensure optimal efficiency, Sm'D carabiners use the Keylock system: the body/gate interface does not have a hook that could snag on anchors, ropes, harness equipment loops...



To facilitate equipment checks, SCREW-LOCK manual locking carabiners have a red band that is visible only when the carabiner is not locked.

Short Description Ultra-light asymmetric carabiner





Selling Points



- D shape is especially suitable for attaching devices
- Compact aluminum carabiner, for workers at height looking to reduce weight to a minimum
- Easier handling:
 - fluid interior design limits the risk of having a catch point and facilitates rotation of the carabiner
 - Keylock system to avoid any involuntary snagging of the carabiner
- H cross-section:
 - ensures an optimal strength/weight ratio
 - protects markings from abrasion
- Hole for connecting TIBLOC or MICRO TRAXION type devices, limiting the risk of losing them
- Two locking systems available:
 - TRIACT-LOCK: automatic locking with triple-action gate opening
 - SCREW-LOCK: the manual screw-lock with red band provides a visual warning when the carabiner is unlocked
- Available without locking system, for easy clipping during progression using climbing techniques

Specification

- Material(s): aluminum
-

Specifications by reference

Reference(s)	M39A TL	M39A SL	M39A S	M39A TLN
				
Weight	55 g	45 g	40 g	55 g
Locking system	TRIACT-LOCK	SCREW-LOCK	Without locking system	TRIACT-LOCK
Certification(s)	CE EN 362, CE EN 12275 type B, EAC	CE EN 362, CE EN 12275 type B, EAC	CE EN 12275 type B	CE EN 362, CE EN 12275 type B, EAC
Color(s)	yellow	yellow	yellow	black
Major axis strength	23 kN	23 kN	23 kN	23 kN
Minor axis strength	8 kN	8 kN	8 kN	8 kN
Open gate strength	7 kN	7 kN	7 kN	7 kN
Gate opening	18 mm	20 mm	23 mm	18 mm
Made in	FR	FR	FR	FR
Guarantee	3 years	3 years	3 years	3 years
Inner pack count	1	1	1	1
Case quantity	20	20	20	20
EAN	3342540817494	3342540817524	3342540817531	3342540817487

Reference(s)	M39A SLN	M39A SN
		
Weight	45 g	40 g
Locking system	SCREW-LOCK	Without locking system
Certification(s)	CE EN 362, CE EN 12275 type B, EAC	CE EN 12275 type B
Color(s)	black	black
Major axis strength	23 kN	23 kN
Minor axis strength	8 kN	8 kN
Open gate strength	7 kN	7 kN
Gate opening	20 mm	23 mm
Made in	FR	FR
Guarantee	3 years	3 years
Inner pack count	1	1
Case quantity	20	20
EAN	3342540817517	3342540817500

Related product(s) RIG
I'D@S
GRILLON